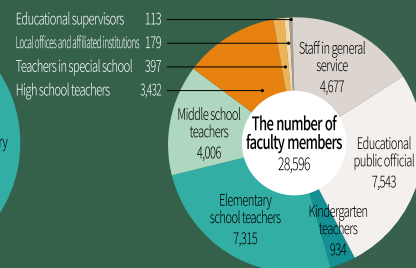
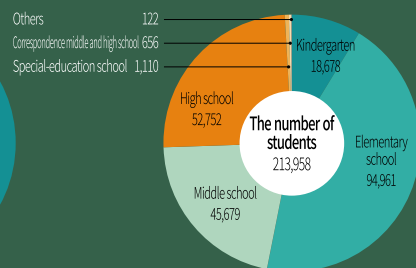
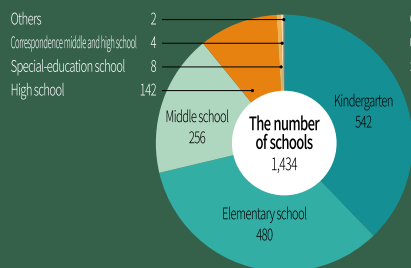




Joyful Learning
Exciting Tomorrow

If we embrace children, the children embrace the world

Status of Education in Jeollanamdo (as of April 1, 2019)



*Japan

English Camp of Jeollanamdo International Education Institute in cooperation with Saga Prefecture and Kochi Prefecture

Australia

Global field trip

*Philippines

Dream Project of visiting grandparents' homeland

Cambodia

Global volunteering for 'Adolescents, Challenge Your Future Project'

*Laos

Global volunteering for 'Adolescents, Challenge Your Future Project'

**Kyrgyzstan

Jeonnam Railway School of Hope and Unification
Collaboration on educational exchange with Shanxi in China

*Mongolia

*China

*Russia

Jeonnam Railway School of Hope and Unification
Signing the MOU with Saint Petersburg State Conservatory

*Germany

*Netherlands

*Denmark

*Sweden

Overseas training for teachers and educational supervisors

Canada

Overseas training for teachers and educational supervisors

*USA

Overseas training for teachers and educational supervisors
Global competence enhancing for 'Adolescents, Challenge Your Future Project'

Students will open up the future society with each other as democratic citizens and lead the world as global leaders

Jeollanamdo is a blessed land with mountains, rivers, fields, and seas in harmony. It has profound history and rich culture.

We hope that the students in Jeollanamdo will grow up as democratic citizens who open up the future together by taking these assets as spiritual nourishment.

We will help all the children of Jeollanamdo to grow to own their happy lives and lead the future. We will promote an era of happiness with education in Jeollanamdo through student-centered education and class innovation.

Superintendent of Education for Jeollanamdo,

Suk-Woong Jang





Right direction creates a good path. Education in Jeollanamdo walks in the path of innovation with five indicators as a compass. Education in Jeollanamdo is moving forward with the power of human being, cooperation, democracy, and innovation.

A compass for education

Five Indicators of Education in Jeollanamdo



Confident Students who want to Learn

The classroom in Jeollanamdo is a learning community filled with respect and consideration. In the classroom, students learn and grow to realize the infinite possibilities. In the classroom are students, growing as global leaders to open up the bright future.

- Student-centered curriculum
- Teacher's professional development on classroom innovation
- Education fostering students' dreams
- Education for creativity and convergence



Safe School with Autonomy and Responsibility

We provide delicate safety net for all the children. We offer restorative practices to students in trouble, customized support to students in danger and alternative program to the teenagers outside of school. Education in Jeollanamdo pursues responsibility education.

- Practical education with respect and consideration
- Safe and healthy schools
- Responsible education that leaves no child behind



Transparent Administration with Support and Sympathy

We actively support education field and respect educational autonomy for the quality education. Education in Jeollanamdo pursues transparent, fair, reliable, and honest administration.

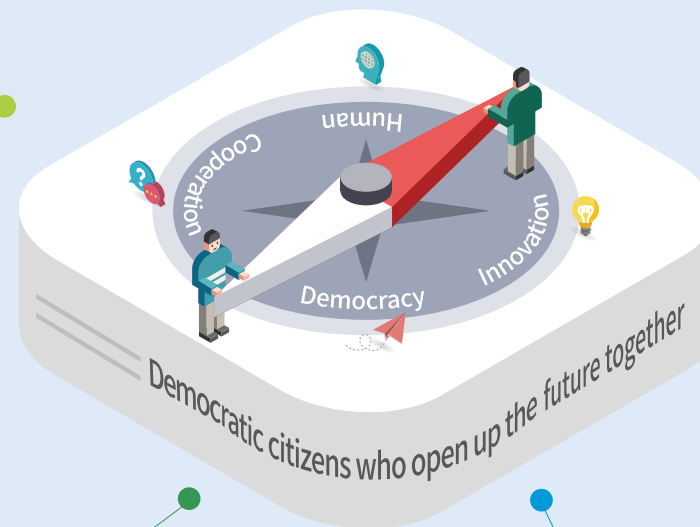
- Support of school operation centered with educational activities
- Improving welfare for the faculty members
- Reliable and transparent administration



Equality of Education Welfare

Education in Jeollanamdo pursues a universal education welfare so that all the students can fulfill their own dreams without discrimination. We support small schools to be the center of local community and do our best to reduce educational gaps.

- Universal welfare in education
- Education without discrimination
- Strengthening small school



Educational Autonomy with Communication and Cooperation

It takes a village to raise a child. The entire village becomes the educational arena. We raise children to be future leaders by cooperating with local community and listening carefully to the citizens.

- Field-based educational policies
- Increasing citizen's involvement in educational activities



Students-teachers-parents-village constitutes a closely-related educational community. The whole community becomes stronger when each of them feels improved. The innovative policies of Jeonnam education provide everyone with 'Better Tomorrow'.

We cherish every child

Map of Hope for Innovative Education in Jeollanamdo



Jeonnam Railway School of Hope and Unification

Adolescents, Challenge Your Future Project

The adolescents from elementary, middle, and high school and outside school voluntarily organize teams of 3-10 persons to explore career paths by planning and implementing activities, and develop future capabilities through the challenges for their dreams. It is a student-centered experience program of Jeollanamdo with 510 teams at present as of 2019.

For 17 days, the first graders of each high school in Jeollanamdo participate in the railway school program that passes through Manchuria, Baekdosan, and anti-Japan historical sites in Russia to raise historic consciousness and have a will for peaceful unification. As the railway school is running, students grow up as democratic citizens.

Professional Learning Community

It is a joint study meeting where teachers voluntarily manage by themselves to reform class. 1,811 learning communities are actively being operated especially thanks to all around supports by Jeollanamdo Office of Education from operating expenses to sharing the achievement of the meeting. We induce class innovation by enhancing the professionalism of teachers.



Education in Jeollanamdo
makes differences
Policies for innovation by
Jeollanamdo Office of Education

Jeollanamdo Future School

Based on school innovation, it raises democratic citizens who open up the future together. It pursues core competences education, collaboration with local community, and the reconstruction of student-centered school space. Jeollanamdo's nature-friendly and future-oriented schools are realized through the participation of educational community.

School Support Center

It is an organization that reinforces the function of supporting students and school centered educational activities by redesigning the existing office of education. It deals with human rights and school support issues, which school requests the most. This enables the Office of Education to support schools and schools normalize education.

Jeollanamdo Education Participatory Committee

We realize substantial education autonomy by listening to students, parents, teachers, local government, civic organizations, etc in the process of establishing and running the major policies of education in Jeollanamdo. Jeollanamdo Education Participatory Committee composed of 30 persons realizes the values of participation, cooperation, communication and governance by the principles of democracy.

